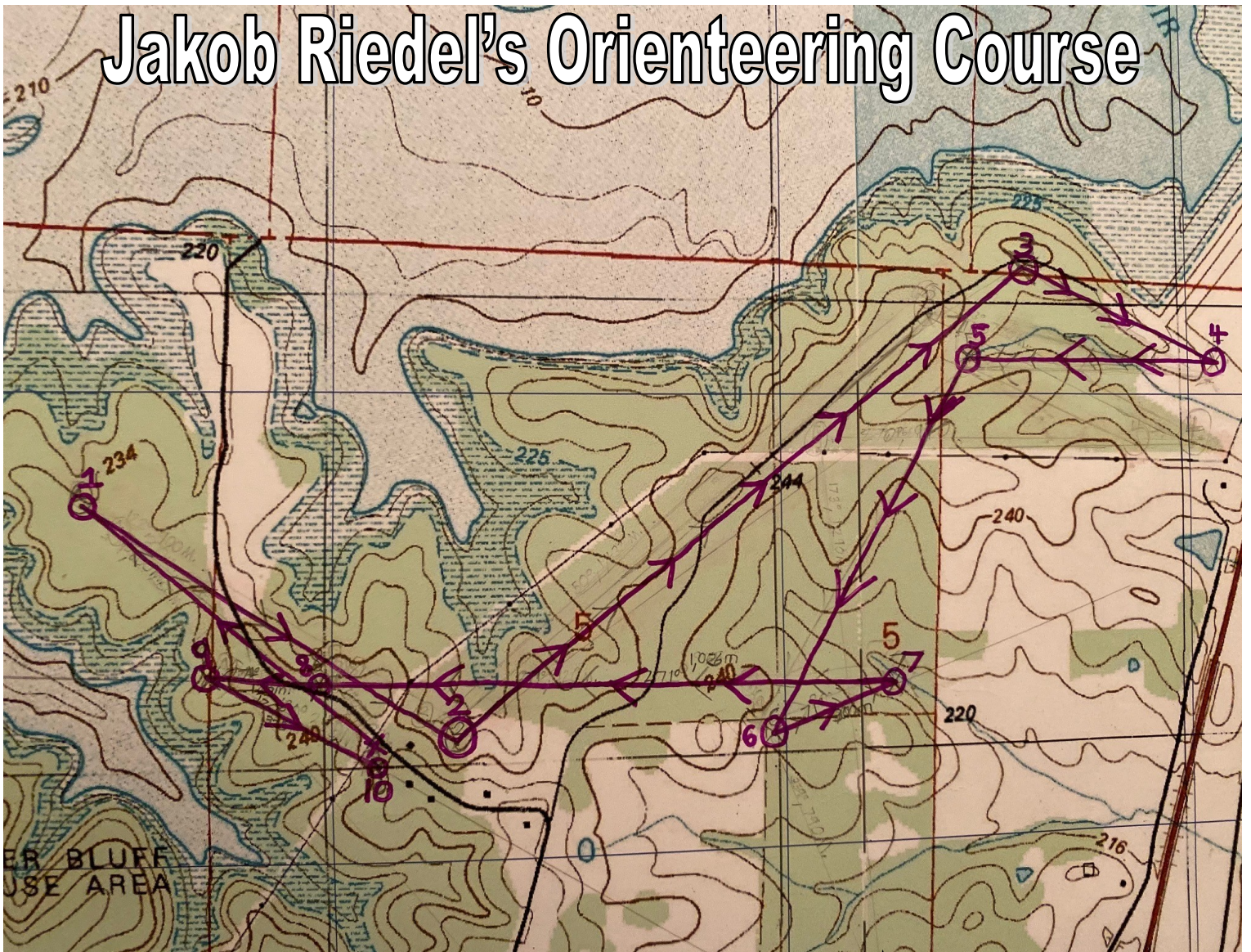


Jakob Riedel's Orienteering Course



★ Points 1-10 ★

START POINT	NORTH	Orientate Compass to North	
POINT 1	310 DEGREES	700 METERS	Near a path.
POINT 2	123 DEGREES	741 METERS	Beside a creek, abreast of a fence with electric cord.
POINT 3	51 DEGREES	1,220 METERS	Main bike route on left side of point.
POINT 4	115 DEGREES	330 METERS	Power lines to the front, parallel to the start of the dike, on cement slab by a few trees.
POINT 5	271 DEGREES	430 METERS	Creek to the front, low ground area.
POINT 6	210 DEGREES	772 METERS	Open field to the front, deer stand directly in front.
POINT 7	72 DEGREES	296 METERS	Several intersecting creeks, low ground.
POINT 8	272 DEGREES	1,026 METERS	Dirt road in front, going up a hill, fence intersects point.
POINT 9	275 DEGREES	125 METERS	Right at edge of water, white stones on ground by the point.
POINT 10	121 DEGREES	325 METERS	Parking lot—left of the point.